

SharpDrain® | Polished Concrete

PSDPC.0900

A drain designed for polished concrete without a flange allowing for continuous concrete depth for greater strength. Concrete can be poured into the insert at 25mm thickness. Supplied with installation feet and a low profile outlet which can be rotated for easy installation.



Specification

MATERIAL

Stainless Steel and Plastic

CAPACITY

48 l/min

OUTLET

Rotating Outlet

USAGE

Linear Drain

FLOORING

Polished Concrete

REMOVABLE TRAP FOR CLEANING

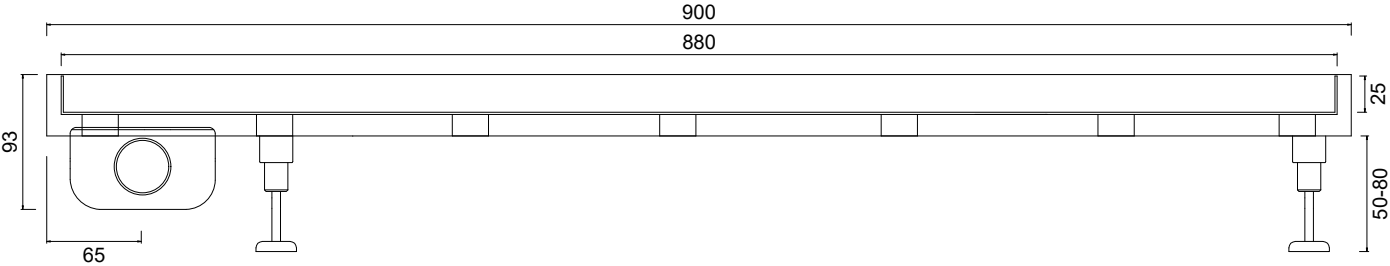
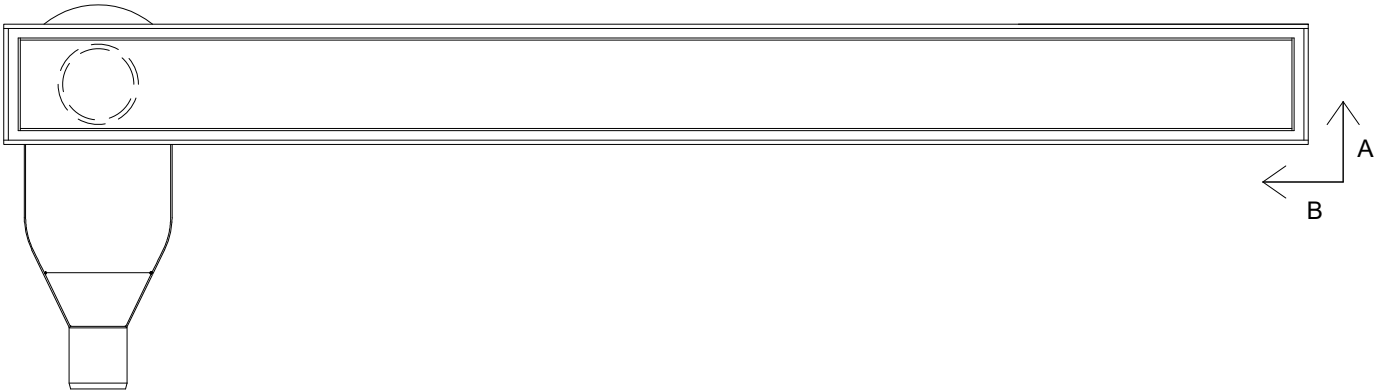
Yes

SharpDrain® | Polished Concrete

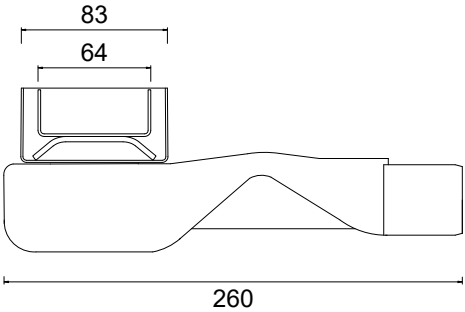


PSDPC.0900

Plan View



Section A



Section B

WM | Wetroom Materials

www.wetroommaterials.com sales@wetroommaterials.com

UK: Derwentside, 25 Town Street, Duffield, Belper, Derbyshire, DE56 4EH T: +44 (0) 1332 840 820
IRE: Unit E1 Ballymount Industrial Estate, Walkinstown, Dublin 12, D12 WR60 T: +353 (0) 1 297 3488