



 **wmm**  
wet room materials

UNIQUE SCANDINAVIAN  
WET ROOM SOLUTIONS

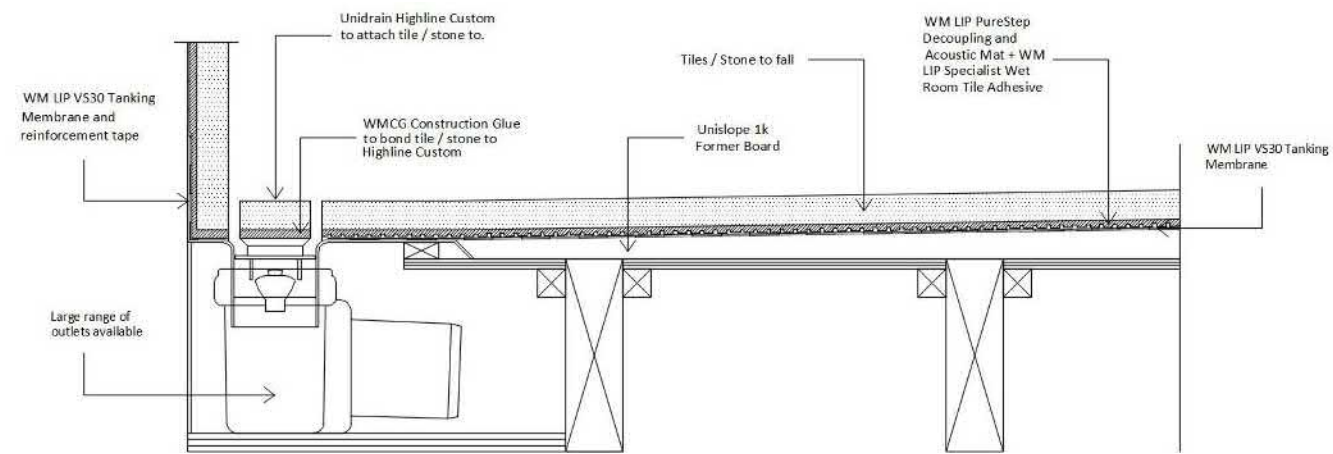
UniSlope®

 unidrain®

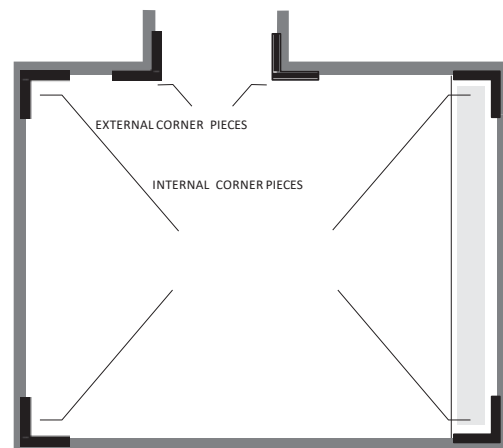
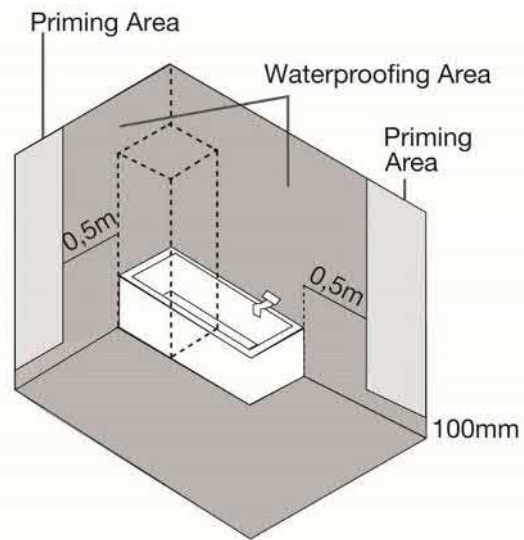
## HOW TO INSTALL A WET ROOM

IT IS ESSENTIAL THAT A WET ROOM IS INSTALLED CORRECTLY TO PREVENT LEAKS AS WELL AS ENSURING PERFORMANCE AND LONGEVITY. BELOW OUTLINES HOW WE RECOMMEND A WET ROOM IS INSTALLED AND WHAT MATERIALS SHOULD BE USED. USING MATERIALS THAT ARE NOT APPROVED CAN CAUSE THE FOUNDATIONS TO FAIL.

### UNISLOPE CROSS SECTION



### RECCOMENDED WATERPROOFING AREA



## INSTALLATION MATERIALS

OUR INSTALLATION MATERIALS OFFER ALL THE PRODUCTS NEEDED TO COMPLETE YOUR WET ROOM INSTALLATION. THEY ARE DESIGNED TO WORK TOGETHER AND HAVE A RANGE OF APPROVALS FROM EC1 PLUS TO ETAG 022 (EUROPEAN TECHNICAL APPROVAL GUIDELINES).

### INSTALLATION KIT

- Kit Includes
- 25kg bag Wet Room Adhesive
  - Two Internal and External Corner Pieces
  - Construction Glue
  - Transparent Silicone

Order Ref  
**WMMKU**



### PURESTEP ACOUSTIC AND DECOUPLING MAT

Designed to neutralise tension from the subfloor to minimise impact of movement and protect tiles. PureStep also provides acoustic reduction properties and protects tanking membrane in the event of tile damage.

Order Ref  
1m x 5m **WMPS05**  
1m x 10m **WMPS10**  
1m x 20m **WMPS20**



### WATERPROOFING KIT

Easy paint-on application suitable for wood and cement based products. The membrane is designed to move and stretch with the building. Kit consists of Primer, Joint Tape and liquid Membrane  
Coverage: 7-8m<sup>2</sup> with two applications.

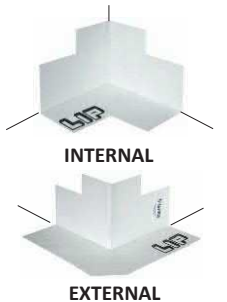
Order Ref  
**WMVS30K**



### CORNER PIECES

LIP preformed reinforcement tape is used to secure the internal . External corner joints of a wat room or bathroom. This is used in conjunction with LIP VS30

Order Ref  
Internal **WMICP**  
External **WMECP**



### WET ROOM TILE ADHESIVE

LIP Wet Room Tile Adhesive (white) is a special, high elasticity cement-based adhesive with great tensile strength.  
Coverage: 2.3kg per m<sup>2</sup> at 1mm thickness depend on tiles

25kg Bag  
Order Ref  
**WMSTF25**



### CONSTRUCTION GLUE

Bond your tiles to the Highline Custom rail or a frame to the main drain body. The bond will not disintegrate when in contact with water. Can also be used outside of the shower.

290ml Cartridge  
Order Ref  
**WMCG**



### WET ROOM SCREED

LIP is a cement based tension free fibre reinforced wet room screed. It retains a slope and can work from 2mm.  
Coverage: 1.8kg per m<sup>2</sup> at 1mm thickness.

25kg Bag  
Order Ref  
**WM226**



### TRANSPARENT SILICONE

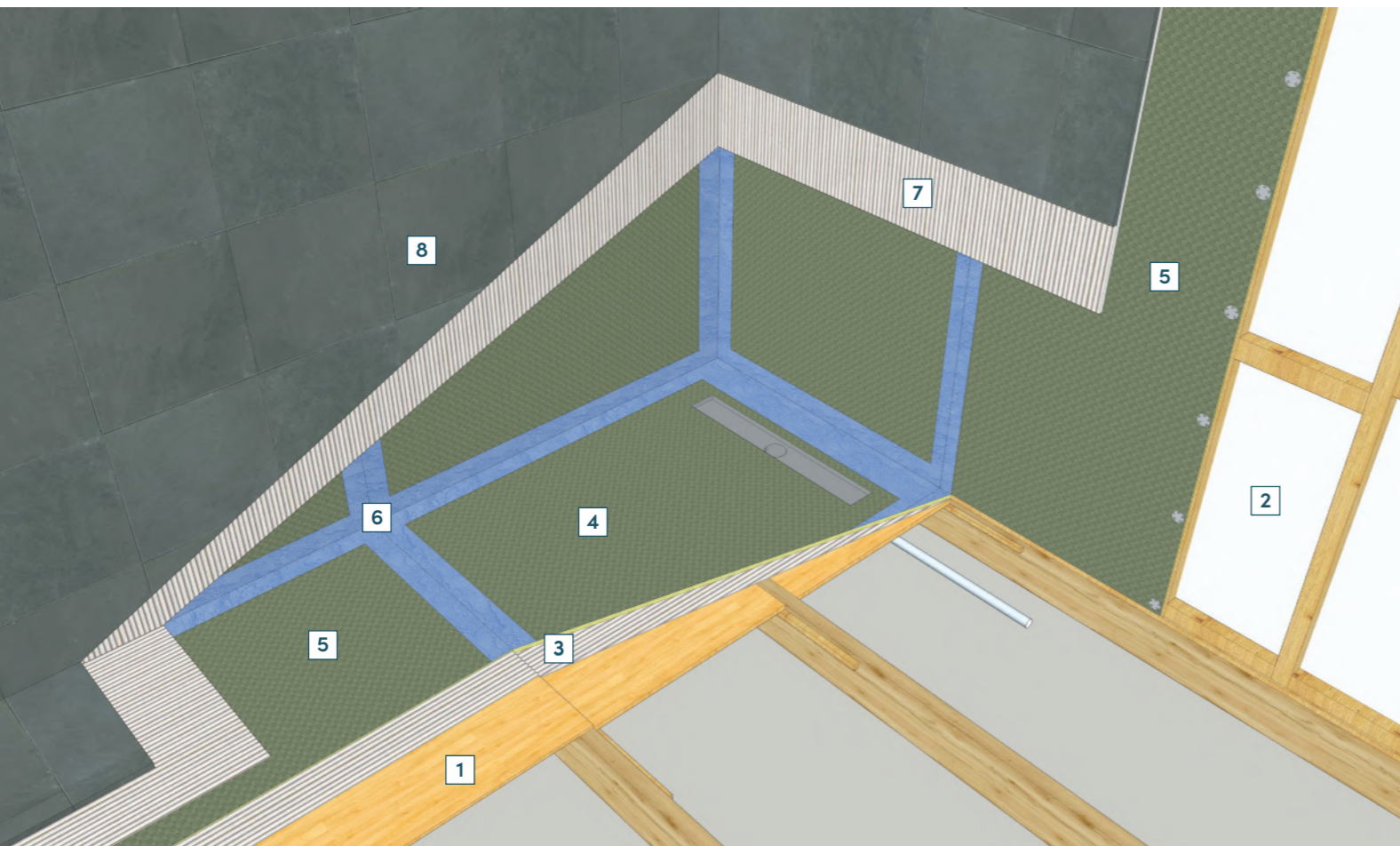
Provides a flexible waterproof seal for movements joints. Transparent silicone helps protect your wet room or bathroom while not impacting its appearance.

300ml Cartridge  
Order Ref  
**WMTS**



# Waterproofing a Wet Room

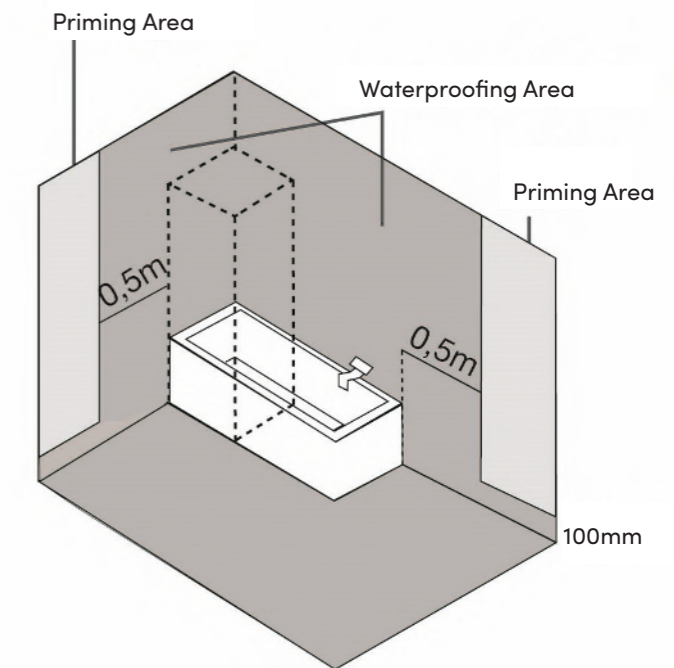
High Performance Thermal Construction Board. A fast and durable way to create the walls and floor within your bathroom. SharpBoard can be fixed using cement based tile adhesive or mechanical fixes. Use LIPVS30 waterproofing to seal all joints and fixings to create 100% water tight surface.



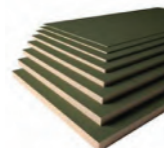
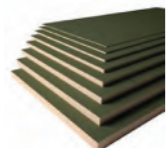
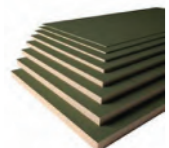
In every bathroom or wet room construction, sufficient tanking should be installed in order to create a water tight area. Waterproofing membranes form the barrier between the finished floor surfaces and sub-floor components; preventing damage to other areas in the property.

1. Plywood boards recessed between floor joists and supported by batons fixed to joists
2. Stud wall with 400mm or 600mm centres. When using mosaic wall tiles 300mm stud centres are recommended for additional support
3. Adhesive applied onto ply. The thickness of the adhesive under SharpSlope and SharpBoard can be adjusted to allow for the top of the boards to be flush with each other
4. SharpSlope board installed onto adhesive on top of recessed plywood
5. SharpBoard fixed to studs with dry wall screws and washers. 20mm boards recommended for 400mm and 600mm stud centres, 12.5mm or 20mm can be used with 300mm stud centres. Use adhesive to apply to floor
6. Waterproofing membrane and reinforcement tape applied to all movement joints e.g. where the wall and floor meet as well as all joints between boards
7. Tile adhesive applied onto boards and waterproofing once waterproofing is completely dry
8. Tiles

## Recommended Waterproofing Area Using Sharpboard - LIPVS30



## Waterproofing Materials



SharpBoard 6mm Order Ref	SharpBoard 12.5mm Order Ref	SharpBoard 20mm Order Ref	Galvanised Washers Order Ref	Construction Glue Order Ref
SB06	SB12.5	SB20	SBGW50	WMCG

Lightweight high-density construction board designed for wet rooms and bathrooms.

- 1200 x 600mm
- Waterproof
- Insulation Properties improves heat retention
- Maximises underfloor heating performance
- Ideal for tiles, synthetic renders and decorative plaster

35mm Galvanised Washers to mechanically fix SharpBoard to walls and floors.  
50 Washers per bag.

High performance adhesion that is water resistant.

- Required to fill gaps smaller than 5mm around boards and to bond tile / stone to tile insert



## Waterproofing Materials



Wet Room Screed Order Ref	3kg Tanking Kit Order Ref	12kg Tanking Kit Order Ref	Installation Kit Order Ref	Reinforcement Tape Order Ref
WM226	WMVS10K	WMVS30K	WMIKU	WMT25

For creating slopes in a wet room.

- 20kg Bag
- Cement based, tension free and fibre reinforced screed
- Works from 2mm thickness
- Coverage 1.8kg per m2 at 1mm thickness

Easy Paint on application approved for wooden, cementitious, metal and plastic surfaces.

- EC1 Plus Approved
- Low emissions
- Primer
- 25m Tape
- 3kg Membrane
- Coverage 2sqm

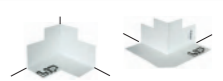
Easy Paint on application approved for wooden, cementitious, metal and plastic surfaces.

- EC1 Plus Approved
- Low emissions
- Primer
- 25m Tape
- 12kg Membrane
- Coverage 8sqm

Designed for wet room and bathrooms.

- CE Approved, 20kg Wet Room tile adhesive – white
- 2 x Internal corner pieces for waterproofing reinforcement
- Bonding Glue
- Transparent silicone to seal joints once tiled

Reinforcement tape to be used with LIPVS30 on all joints and around first fixes. 25 metres of tape.



Internal Corner Ref	External Corner Ref
WMICP	WMECP

LIP preformed reinforcement tape is used to secure the internal/external corners. This is used with the LIP VS30.



# ABOUT WET ROOM MATERIALS

DRIVEN BY INNOVATION WITH A PASSION FOR QUALITY AND SERVICE

Adopting Scandinavian principles and regulations, the Wet Room Materials range conforms to the design principles of Simplicity, Functionality and Minimalism – providing the highest level of aesthetics and technical design.

For more than 15 years, Wet Room Materials have been enhancing wet room design by introducing luxury Scandinavian design lead products into the UK and Irish bathroom industry.

Originally established as an installation company, Wet Room Materials are now a market leader in the distribution of exclusive wet room products and services. Along with having an exceptional product portfolio, we can provide a highly qualified, Danish trained installation service, producing an effective and professional finish to every project.

Built from a passionate and dedicated team, we create close relationships with architects, designers, developers and showrooms to best understand specific requirements, ensuring they are fulfilled effectively; offering a turnkey approach with all projects and enquiries.

Our products and professionalism have a proven track record within the residential and commercial sectors, evoking long-term relationships and repeat business. We trust that you endorse this sentiment along with many of our loyal clients.

## DISCOVER MORE



FULL PRODUCT  
BROCHURE



THE ARCHITECT'S  
WET ROOM  
DESIGN GUIDE



REQUEST A CPD



wet room materials

Wet Room Materials UK  
Derwentside  
25 Town Street  
Duffield Belper  
Derbyshire  
DE56 4EH  
England  
+ 44 (0) 1332 840 820

[sales@wetroommaterials.com](mailto:sales@wetroommaterials.com)  
[www.wetroommaterials.com](http://www.wetroommaterials.com)

Wetoom Materials Ireland  
Unit E1  
Ballymount Ind Est  
Walkinstown  
Co. Dublin  
D12 WR60  
Ireland  
+353 (0)1 2973488