



## SharpDrain® | Linear Installation

### Kit Includes

32 Litres Per Minute  
Linear Drain  
1½" Connection  
50mm Water Seal  
Tile Insert / Panel / Tile Base  
330mm Factory Fitted Membrane  
PVD Coated Colours



# SharpDrain® | Linear Installation

## Before installing

**Ensure the drain is suitable for your requirements and you have all components to complete the installation**

## Important

Read all the pages of these instructions fully and thoroughly before you commence installation and keep in a safe location for future reference.

### Plumbing

All plumbing works should be carried out by a fully qualified professional plumber.

### Sub Floor

It is important that SharpDrain is installed onto a strong, level, stable floor. Movement could affect the performance of your wetroom.

### Checklist/Safety Notes

- Check you have all components before installation. If you do not have all the components, do not install and contact your retailer.
- Check all the contents for damage. If any parts are damaged, do not install and contact your retailer.
- SharpDrain must be installed flat and horizontal.
- Check the location of pipes, electrical cables and all other services prior to drilling, cutting and screwing into walls, ceilings and floors.
- Ensure your tools for installation are fit for purpose and follow manufacturer's instructions provided with the tools.
- The area / room must be clean, dust free with first fix plumbing and electrics in place prior to applying the vinyl.
- Always ensure that the Installation area is kept safe, especially from children and pets.
- Safety goggles and masks should be worn at all times.

### Liability

The Manufacturer will not accept any liability for failure if SharpDrain has been installed incorrectly and with disregard to the instructions.

## Scan to see SharpDrain Installation Video

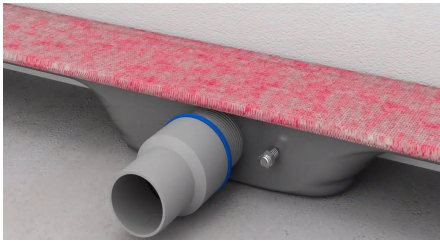




# SharpDrain® | Linear Installation

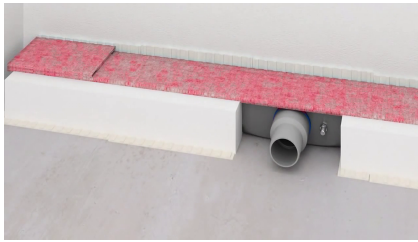
Shallow linear drain which is perfect for wetrooms that have minimal floor depth. Stainless Steel drain that only requires 72mm depth and has a 50mm water seal. Tile Insert and Panels are available as Brushed Stainless Steel or durable PVD coated colours. SharpDrain Tile Line has a base to apply the tile onto. Factory fitted membrane for added waterproof protection.

1



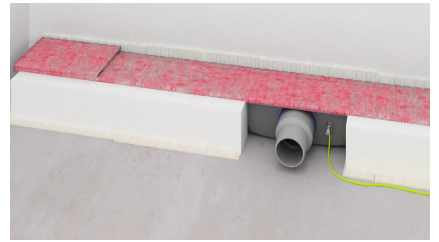
Screw the connector to the drain and make sure it is tight.

2



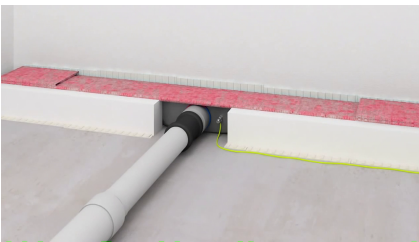
If using the polystyrene support, bed into adhesive.

3



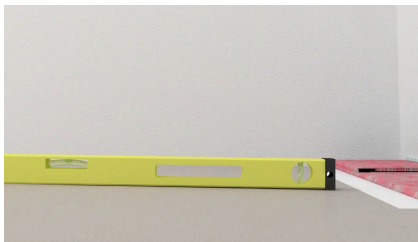
If required, connect earth wire.

4



connect pipework to the drain allowing for slope in pipe.

5



Slope the floor 1.25% to 2% to the drain.

6



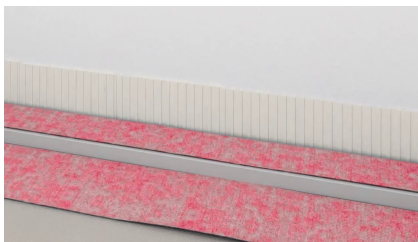
Place fitted membrane into position.

7



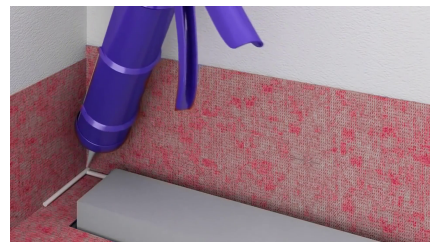
Cut the corner where the membrane overlaps.

8



Using adhesive, apply membrane to floor & wall. Smooth to remove bumps.

9



Apply glue to the corners where the membrane was cut.

# SharpDrain® | Linear Installation

10



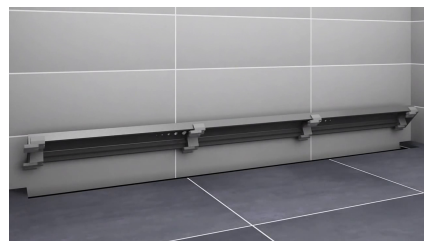
Stick plastic corner pieces onto the glue.

11



Waterproof remaining areas and tile the walls and floor.

12



If required, use heightening blocks to adjust the panel height to suit floor.

13



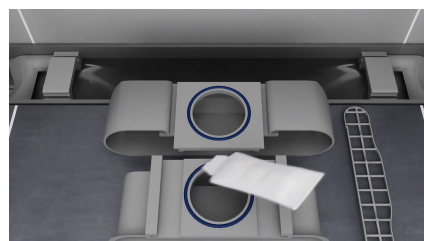
Place the Tile Insert / Panel / Tiled base into position.

14



Silicone or grout between the tile and the frame. Note required for Tile Line.

15



Grease the O rings on the drain before placing into the drain.

**Scan to see  
SharpDrain Installation Video**

