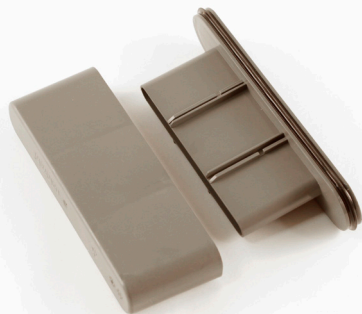






## CLEANING INSTRUCTIONS FOR CLASSICLINE

1



### HOW OFTEN SHOULD I CLEAN THE WATER TRAP?

The water trap in the corner drain should be cleaned regularly, as soap scum, etc. can build up around the water trap. unidrain® recommends cleaning the water trap approximately every 6-8 weeks. Frequency will depend on how often the shower is used and the amount of hair that enters the drain.

2



### LIFT THE GRATING FROM THE DRAIN

The grating sits loosely in the frame and can be lifted using a finger, a small tool or with the unidrain® hook (accessory).

3



### REMOVING THE WATER TRAP

The water trap can be lifted out using a finger. Pull the catch - the water trap may be stuck due to dirt, debris, etc. In this case, press with your finger or other object into one end of the water trap and pull the catch on top of the water trap. The water trap can then be loosened and removed.

4



### CLEANING THE WATER TRAP

Disassemble the top and bottom components of the water trap by pulling them apart. Rinse the two components under warm running water.

You may use mild non-abrasive soap, descaling agents and a nylon scouring pad if these are suitable for household use.

5



### ASSEMBLING THE WATER TRAP

After cleaning, reassemble the top and bottom components. The water trap has been correctly reassembled when the two components have 'clicked' into place.

If the water trap has not been correctly assembled, it may result in an unpleasant odour emanating from the drain or hinder water from flowing freely through the system.

6



### WATER TRAP AND GRATING REINSERTION

When the water trap has been reassembled, it can be reinserted in the outlet unit. Push the water trap back into the floor drain to ensure that it is level with the drain edge. Before replacing the water trap, it is a good idea to lubricate the rubber gasket with some washing up liquid/soap so it more easily reinserts and is easier to remove next time you wish to clean it. Lay the grating back in place in the frame.



### MAINTENANCE FOR CLASSICLINE

unidrain® floor drains should be cleaned regularly. Proper care will ensure that your unidrain® system will perform its best over the long term and maintain its appearance. unidrain® floor drains are available in two design ranges: ClassicLine and HighLine. Parts for the two floor drains are made from injection-moulded plastic (polypropylene) or brushed stainless steel (AISI 304).

#### CLEANING THE GRATING, DRAIN UNIT AND STRAINER

Stainless steel is highly durable if it is cleaned on a regular basis. The surface is covered in a thin protective layer of chromium oxide. Corrosion can occur if this protective layer is damaged, for example by impurities present in the steel itself. Strong acids or chemicals such as iodine, chlorine, fluorine, or bromine can also cause corrosion to stainless steel by hindering the oxygen reaction process, thus preventing formation of the protective layer.

Lift the grating and remove the strainer from the drain unit. Clean all three parts using a soft cloth or soft-bristled brush lathered with mild, non-abrasive soap and lukewarm water. Do not use steel wool. Gently polish the grating and drain in the same direction as the brushed grain. The grating can also be treated for lime deposits using ordinary descaling agents intended for household use. Always follow the directions on the product label.

#### CLEANING THE WATER TRAP

Disassemble the top and bottom components of the water trap by pulling them apart. Rinse the two components under warm running water. You may use mild non-abrasive soap, descaling agents and a nylon scouring pad if these are suitable for household use. Always follow the directions on the product label.

#### DRAIN ISSUES

If the floor drain has been cleaned and water is not flowing freely through the system, or an unpleasant odour is emanating from the drain, it is a sign that the water trap has not been correctly reassembled. This occurs because the top component has been pressed down too hard, or because the water trap is not in the correct position. Remove the water trap and ensure that the components have been correctly reassembled with a distance of approx. 1 fingerbreadth between the top and bottom components. Push the water trap back into position at the bottom of the outlet unit.