



## PourFlex® | Installation

### Kit Includes

32 Litres Per Minute  
Linear Drain  
1½" Connection  
Water Seal  
PourFlex® Panel



### Kit Includes

24 Litres Per Minute  
Square Drain  
1½" Connection  
Water Seal  
PourFlex® Panel



## Before installing

Ensure the drain is suitable for your requirements and you have all components to complete the installation

## Important

Read all the pages of these instructions fully and thoroughly before you commence installation and keep in a safe location for future reference. **It is strongly recommend that the drain is on site for 48 hours before installing if it has been stored in a cold or hot area so it can acclimatise as extreme temperature changes can cause expanding and contraction.**

### Plumbing

All plumbing works should be carried out by a fully qualified professional plumber.

### Sub Floor

It is important that PourFlex is installed onto a strong, level, stable floor. Movement could affect the performance of your wetroom.

### Checklist/Safety Notes

- Check you have all components before installation. If you do not have all the components, do not install and contact your retailer.
- Check all the contents for damage. If any parts are damaged, do not install and contact your retailer.
- OurFlex must be installed flat and horizontal.
- Check the location of pipes, electrical cables and all other services prior to drilling, cutting and screwing into walls, ceilings and floors.
- Ensure your tools for installation are fit for purpose and follow manufacturer's instructions provided with the tools.
- The area / room must be clean, dust free with first fix plumbing and electrics in place prior to applying the vinyl.
- Always ensure that the Installation area is kept safe, especially from children and pets.
- Safety goggles and masks should be worn at all times.

### Liability

The Manufacturer will not accept any liability for failure if PourFlex has been installed incorrectly and with disregard to the instructions.

### PourFlex Installation Video



Viewing on pdf? Click QR Code

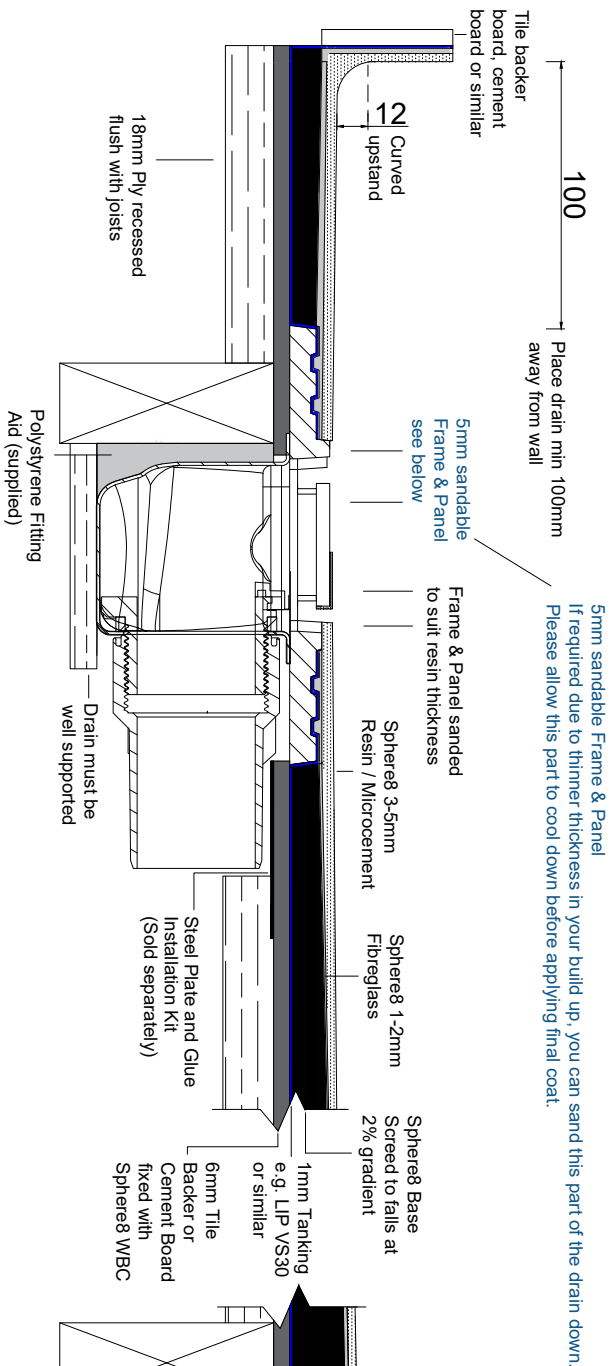
### Wooden Floor Installation Set

SDL.D.WIS

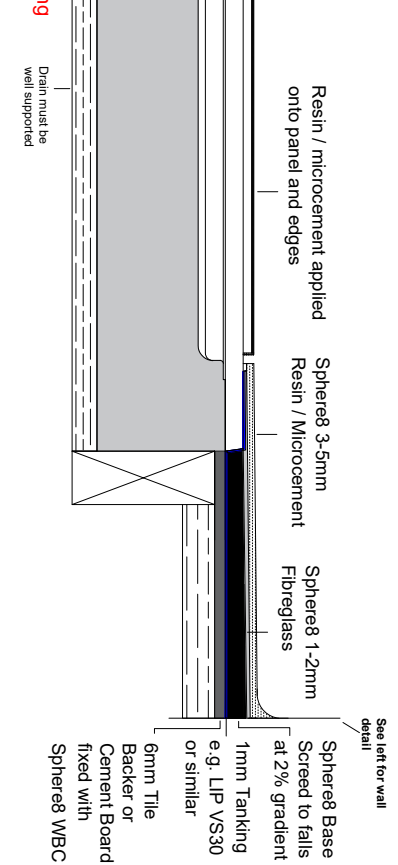
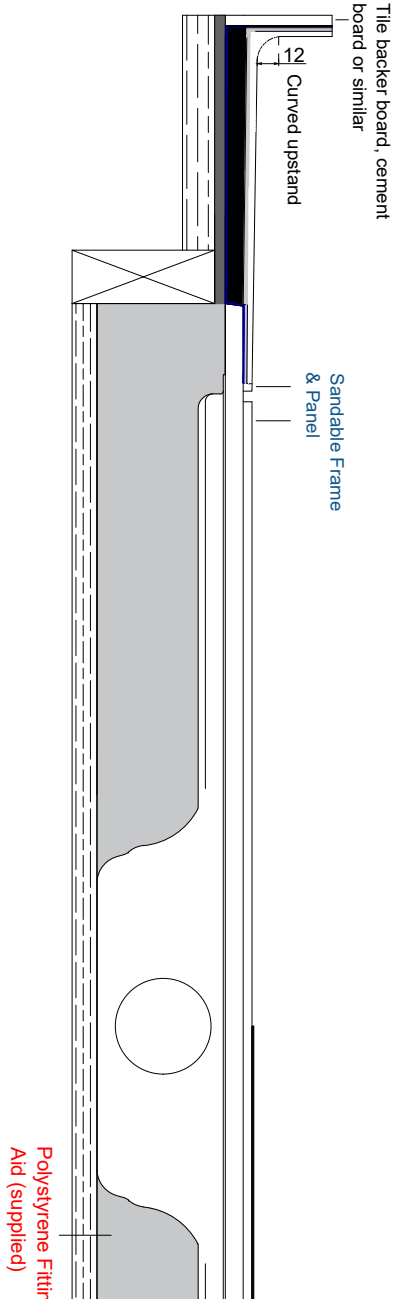
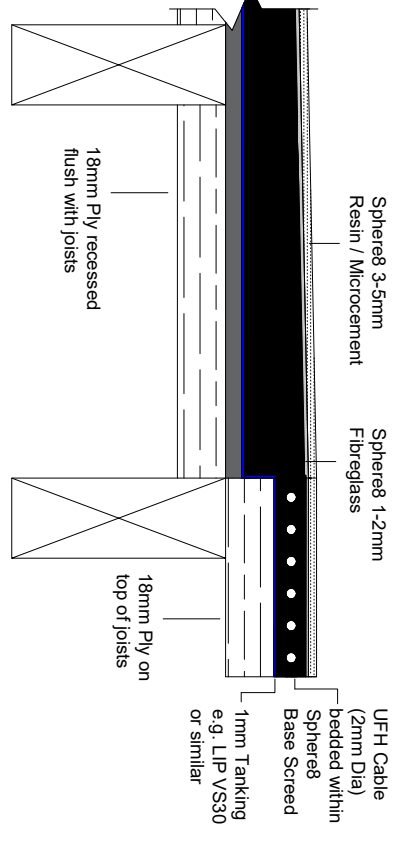
Sold separately



# Example typical build up



5mm sandable Frame & Panel  
If required due to thinner thickness in your build up, you can sand this part of the drain down.  
Please allow this part to cool down before applying final coat.



# PourFlex® | Installation

An innovative drain, designed specifically for poured floors such as Epoxy Resin and Micro Cement. This is a ground breaking design to cater for the requirements of poured floors. PourFlex® allows you to alter the height of the drain to suit the floor thickness.

If sanding the drain or panel, heat can cause expansion - leave to cool for min 15 minutes before pouring resin.

