

## PSDVLE.0900MO1

A steel drain with a low profile rotating outlet positioned at the end of the drain. The drain can be rotated to have the outlet placed on opposite the side. The vinyl is secured in place with the clamping frame which is suitable for vinyl from 0.5mm to 5mm thick. The cover is a Brushed Stainless Steel Panel. SharpDrain Pro Vinyl Linear is very easy to install and is supplied with installation feet.



### Specification

#### MATERIAL

STAINLESS STEEL AND PLASTIC

#### GRATING

BRUSHED STAINLESS STEEL PANEL

#### CAPACITY

36 l/min

#### USAGE

LINEAR DRAIN

#### CLAMPING FRAME FOR VINYL

YES

#### FLOORING

VINYL

#### WATER SEAL TRAP HEIGHT

30mm

Must be installed in accordance with BS EN 1253-6

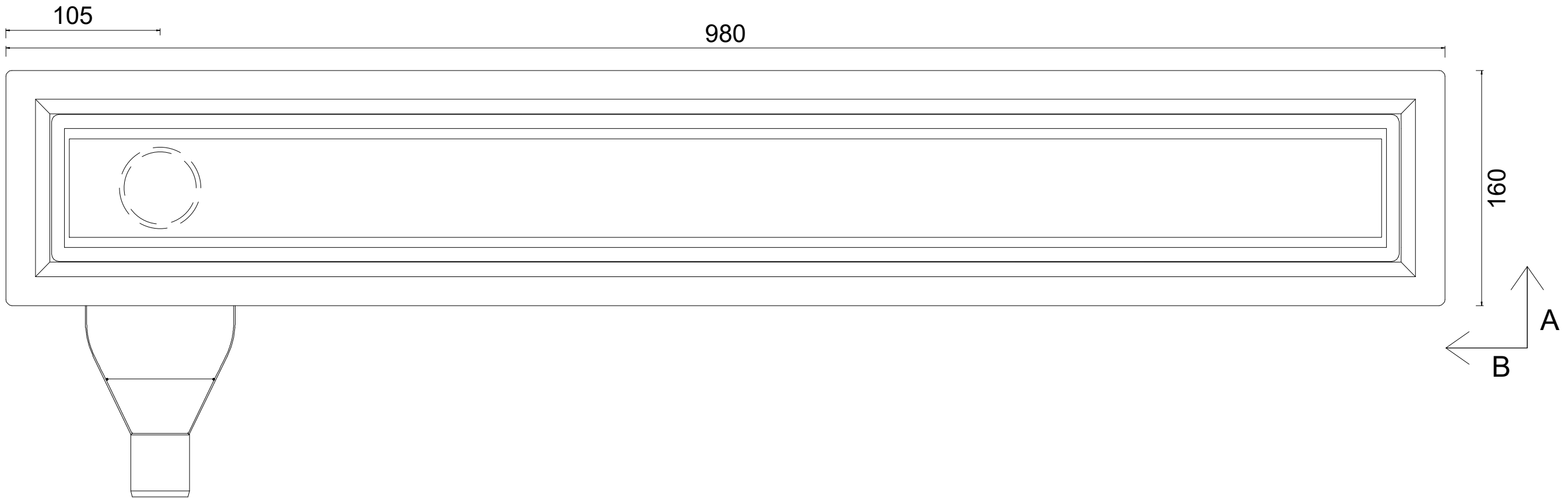
#### REMOVABLE TRAP FOR CLEANING

YES

#### OUTLET

ROTATING OUTLET - FRONT AND BACK FACING

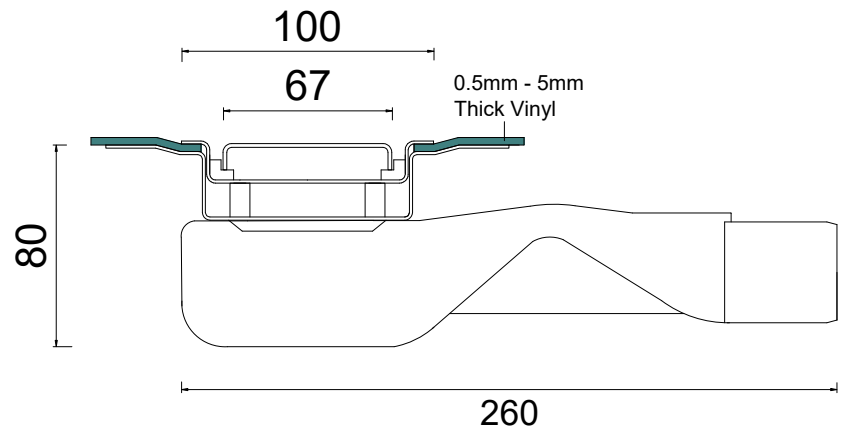
Plan View



Section A



Section B



In addition to the product in this drawing, we have a range of solutions for difference scenarios. If this system is not suitable, please contact us for other solutions.

This drawing is the property of WM | Wetroom Materials and must not be used for any unauthorised purpose without the written consent. Please review all technical information to ensure this system is suitable for your project. If you have any questions, please contact us.

www.wetroommaterials.com | sales@wetroommaterials.com | UK +44 (0) 1332 840 820 | IRE +353 (0) 1 297 3488

**Product Code**  
PSDVLE.0900MO1

**Description**  
900 Model SharpDrain Vinyl Linear End Low Profile  
Shallow Outlet

**Date:** 21/01/2025

**Scale:** 1:3 @ A3

**wm**  
wetroom materials