

PSDVLE.1000

A steel drain with 360° rotating outlet positioned at the end of the drain. The drain can be rotated to have the outlet placed on opposite the side. The vinyl is secured in place with the clamping frame which is suitable for vinyl from 0.5mm to 5mm thick. The cover is a Brushed Stainless Steel Panel. SharpDrain Pro Vinyl Linear is very easy to install and is supplied with installation feet.



Specification

MATERIAL

STAINLESS STEEL AND PLASTIC

GRATING

BRUSHED STAINLESS STEEL PANEL

CAPACITY

48 l/min

USAGE

LINEAR DRAIN

CLAMPING FRAME FOR VINYL

YES

FLOORING

VINYL

WATER TRAP HEIGHT

50mm

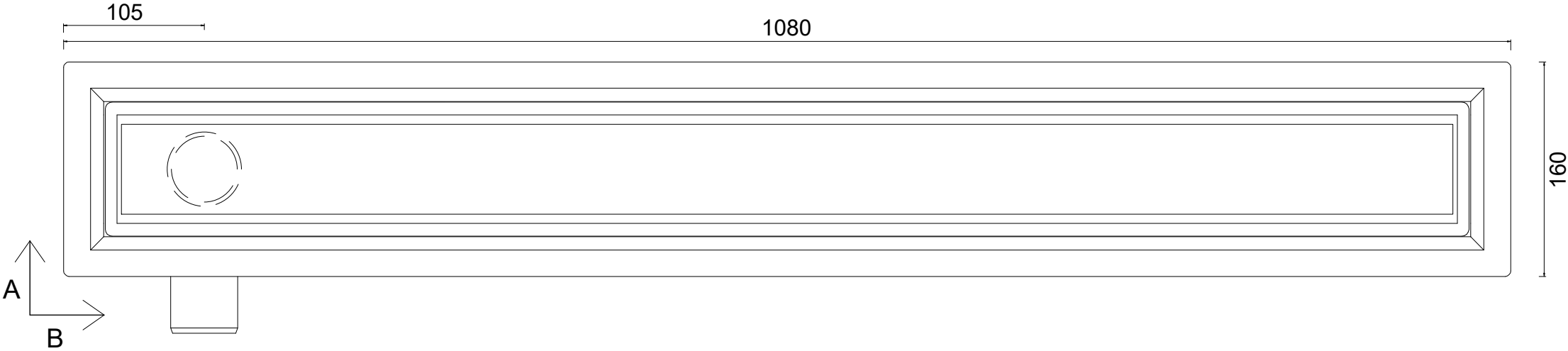
REMOVABLE TRAP FOR CLEANING

YES

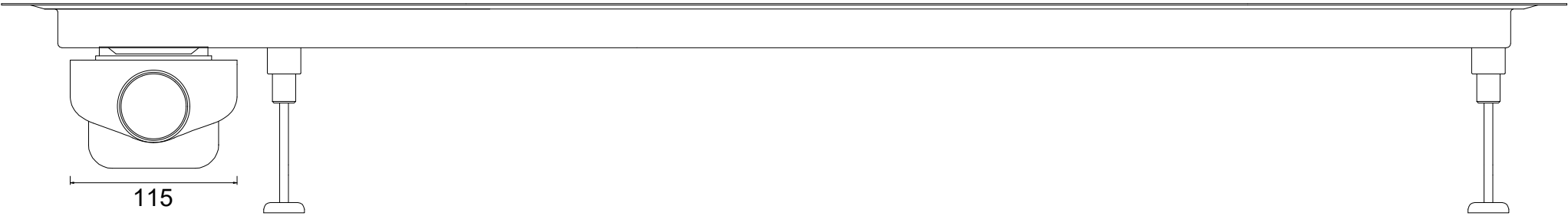
OUTLET

360° ROTATING OUTLET

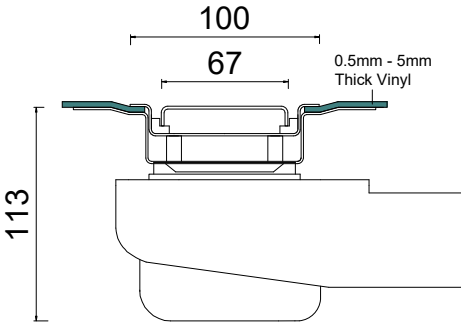
Plan View



Section A



Section B



In addition to the product in this drawing, we have a range of solutions for difference scenarios. If this system is not suitable, please contact us for other solutions.

This drawing is the property of WM | Wetroom Materials and must not be used for any unauthorised purpose without the written consent. Please review all technical information to ensure this system is suitable for your project. If you have any questions, please contact us.

www.wetroommaterials.com | sales@wetroommaterials.com | UK +44 (0) 1332 840 820 | IRE +353 (0) 1 297 3488

Product Code
PSDVLE.1000

Description
1000 Model SharpDrain Vinyl Linear End Standard Outlet

Date: 21/01/2025

Scale: 1:4 @ A3

